



This cabin was constructed by volunteers and State Park staff for your use and enjoyment. Please help keep it neat and attractive for those who will use it after your visit.

### Important Information

- Let someone know where you are going and when you expect to return.
- Cabins may only be used by those who have paid the rental fee in advance, and only on the days specified on the receipt. You must have your receipt-permit with you during your stay.
- Cabins may not be used for commercial activities.
- Refer to the attached information: "Reservation Cancellation and Use Policies."
- The Division of Parks & Outdoor Recreation may close cabins due to weather, maintenance problems, break-up, ice conditions, or other reasons.
- For cabin and trail condition updates call the Public Information Center (907) 451-2705 or visit our website: <http://www.alaskastateparks.org>.

### BE PREPARED!

Refer to the cabin location map on the back of this page.

### What to take to the Cabin:

- The cabin measures 20' X 24'. Three double and two single plywood platform bunks can sleep eight adults.
- The cabin is supplied with a wood stove, table, seats, propane lantern, broom, ax, saw, and shovel. All other camping equipment and supplies must be provided by the user, including:
  - Sleeping bag
  - Sleeping pad or air mattress
  - Food
  - Disposable propane cylinder for the Coleman lantern
  - Cookware, dishes, utensils
  - Cooking stove and fuel
  - Matches, lighters, paper fire starter
  - First aid items
  - Plastic trash bags
  - Jug of water
  - Saw or ax, just in case
  - Firewood for at least the first night in winter
  - Flashlight

### A few necessary do's and don'ts:

- Do not leave food or garbage in the cabin at the end of your visit. It might seem helpful to share food with future cabin users, but food (even in airtight containers) attracts bears and small animals. It doesn't take them long to seriously damage a cabin.  
Please pack out everything you packed in.
- Do not leave cookware, sleeping pads, or other items in the cabin at the end of your visit.
- The cabins have a propane (disposable cylinder) lantern. Spare lantern mantles should be hanging near the kitchen counter.
- Please leave some cut dry wood for the next visitor. A bow saw and ax are provided for your use. Only down or burnt trees may be cut.
- Keep the fire in the stove under control. Do not leave the dampers open when you are not in the cabin.
- Please dispose of all waste water in the toilet. Water dumped outside the cabin is unsightly, unsanitary, and attracts unwanted wildlife. Do not place garbage in the toilet, please pack it out.
- Target practice is not allowed in the Recreation Area except at the Mile 36.5 shooting range. The discharge of weapons is allowed only for the lawful taking of game.
- Stay alert and cautious of any trapping activity in the area. Traps and bait may be located near trails. Children and pets should be monitored closely.
- Feel free to write your comments in the cabin's logbook. Please report any missing or damaged furnishings or other problems to the Public Information Center in Fairbanks immediately, (907) 451-2705.

### Check out time is 12:00 noon.

#### The Lock Combination is: \_\_\_\_\_

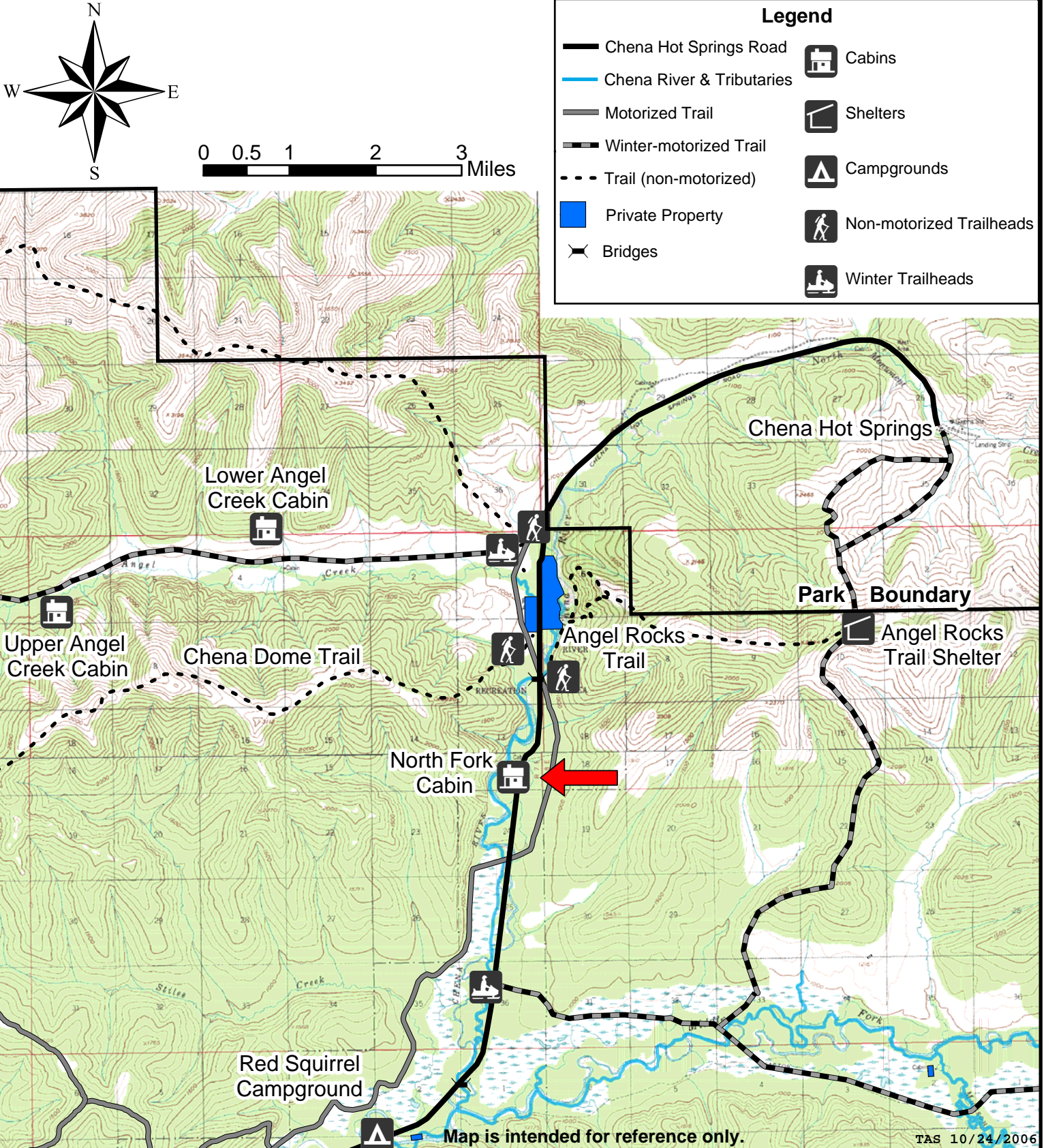
Dial the combination on the bottom of the lock, push the lock together, and then pull it apart. The numbers must all be lined up.

Alaska Department of Natural Resources  
Division of Parks and Outdoor Recreation  
3700 Airport Way  
Fairbanks, AK 99709  
(907) 451-2695



# North Fork Public Use Cabin

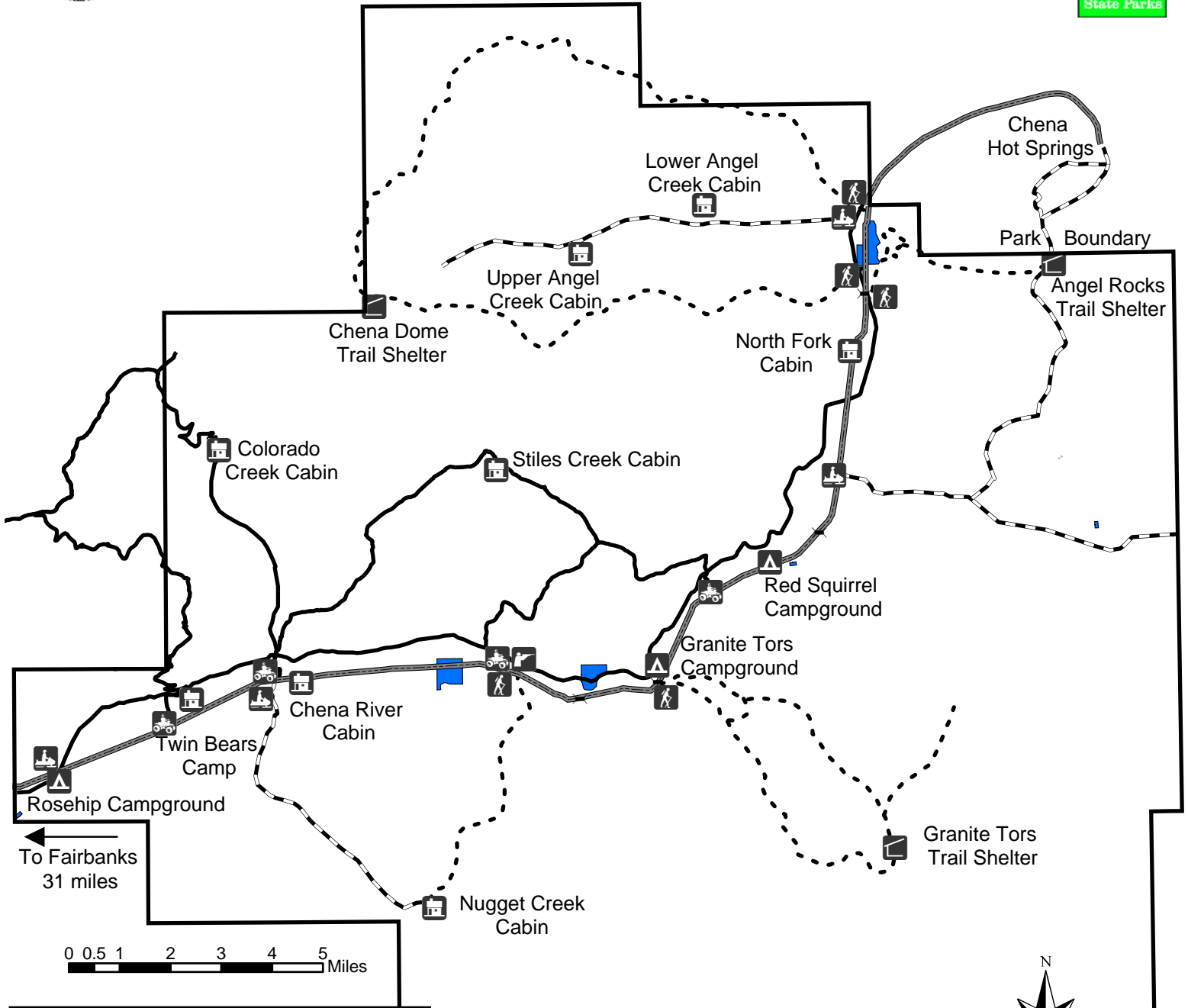
The road to the North Fork cabin is located at mile 47.7 Chena Hot Springs road. Look for a small road and gate on the west side (on the left heading toward Chena Hot Springs). Visitors may drive in, or park and walk from the gate. Walking may be advisable during snowy weather or during breakup. The parking area at the cabin accommodates several vehicles. The combination to the locks on the gate and cabin is shown on the other side of this sheet.



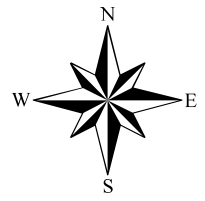




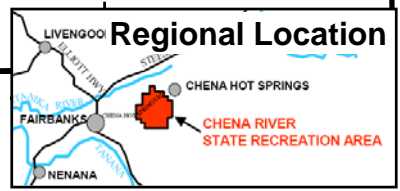
# Chena River State Recreation Area



Legend	
	Chena Hot Springs Road
	Motorized Trail
	Winter-motorized Trail
	Trail (non-motorized)
	Military Land (permit needed)
	Private Property
	Bridges
	Cabins
	Shelters
	Campgrounds
	Non-motorized Trailheads
	Motorized Trailheads
	Winter Trailheads
	Shooting Range



TAS 10/05/2006



Map is intended for reference only.

## **Public Use Cabin and Ice Fishing Hut Reservation Cancellation and Use Policy**

### **General Information**

- Checkout time for cabins is NOON. Reservations are valid from noon to noon.
- Checkout time for ice huts is MIDNIGHT. Reservations are valid from midnight to midnight.
- Cabin and ice fishing hut reservations are issued on a first-come, first-served basis. Reservations may be made no more than seven months in advance for Alaska residents, six months in advance for non-residents.
- The State must receive full payment before a facility will be reserved.
- A person cannot use a cabin for more than 5 consecutive nights or one weekend (Friday-Saturday) per month. This allows more users to be more fairly accommodated. Exceptions may be granted during low use periods.
- Normal back-country hazards exist and at least one person in your party should be experienced in back-country travel.
- Firewood is hard to find at some facilities, so bring some from home, or gather dead and downed, or burnt wood on your way in. Please leave standing dead trees for wildlife habitat.
- If someone is using the facility when you arrive, politely inform them that you have a reservation to use the cabin/ice hut. If they refuse to leave, do not start an altercation. Instead, observe as much information about the individuals as you can (e.g., description, age, clothing), and note the license number of any vehicle parked nearby or in the trailhead. Report the problem as soon as possible to a Park Ranger (451-2695).

### **Reservation Changes or Cancellations**

#### **Rental Fees are not Refundable**

- 1) If you were unable to use the facility due to events beyond your control, such as extreme weather, hazardous conditions (as determined by the Division of Parks), or closure of a road, trail, or facility by the State, you may request a rental credit. Requests for credit must be made within 3 business days of the last date of your reservation.
  - a. Extreme weather in the Northern Region is defined as below
    - i. Minus 30° F for the "North Fork" and "Chena River" Cabins.
    - ii. Minus 20° F for all other cabins and ice huts.
    - iii. Official temperature is taken from Monument Creek (upper Chena River drainage) at 7:00 am. Temperature information may be accessed at <http://www.wcc.nrcs.usda.gov/nwcc/sntl-datarpt.jsp?site=949&days=7&state=AK>
- 2) If you cancel at least 7 days prior to the start of your reservation for reasons not listed above, you may request a credit. There is a \$10 service charge for each reservation change or cancellation except for those reasons listed in 1).
- 3) If you fail to cancel in a timely manner, or fail to use the facility for reasons other than those listed above, cabin credit is not available.

**YOU MUST PRESENT YOUR ORIGINAL RECEIPT/PERMIT, OR PROVIDE A VALID  
RESERVATION NUMBER TO CHANGE A RESERVATION OR RECEIVE A  
RENTAL CREDIT. YOU MAY CANCEL VIA PHONE @ (907) 451-2705.**

### **Access**

Access to most of the back-country cabins can be difficult or challenging in summer due to marshy trail conditions and open water crossings. Although the State endeavors to plow the roads and groom the trails to the cabins in winter, sudden heavy snows, icy conditions, or overflow may hinder access or make your exit difficult. **Be Prepared.** Take extra food and survival gear just in case. During the two or three weeks of freeze up or break-up, trail or road conditions may make access difficult or impossible. Alaska State Parks may close or restrict access to prevent facility or resource damage during these periods. Check with the Alaska State Parks office for current trail conditions.

### **Disclaimer and Responsibilities**

These cabins and ice fishing huts are isolated and rustic with limited facilities. Back-country travel and movement on frozen waters in Alaska can be hazardous. The State's renting of a cabin or ice fishing hut in no way certifies the safety of the trails or the ice on the rivers, sloughs, or lakes. It is the renter's responsibility to determine that weather and ice conditions are safe before venturing to the cabin or hut.

The renter agrees to leave the cabin or hut by the time indicated, and to leave the cabin in a clean and orderly condition and may be held responsible for any damage to the cabin, associated facilities, or park resources.

### **Reservations**

Reservations are accepted by fax, mail, in person, or via the internet at <http://alaskastateparks.org/>. For more information including cabin availability, cabin costs, and an Alaska State Parks Cabin Permit Application, please visit the above website. For all other questions, please call the DNR Public Information Center at (907) 451-2705 between 10:00 am and 5:00 pm Monday thru Friday.

### **For More Information**

<http://www.dnr.state.ak.us/parks/cabins/index.htm>

**PUBLIC INFORMATION CENTER**  
550 W. 7<sup>th</sup> Avenue, Suite 1260  
Anchorage, AK 99501-3557  
(907) 269-8400  
Fax: (907) 269-8901  
pic@dnr.state.ak.us

**PUBLIC INFORMATION CENTER**  
3700 Airport Way  
Fairbanks, AK 99709-4699  
(907) 451-2705  
Fax: (907) 451-2706  
fbx-pic@dnr.state.ak.us